

## Additional Requirements for Decks

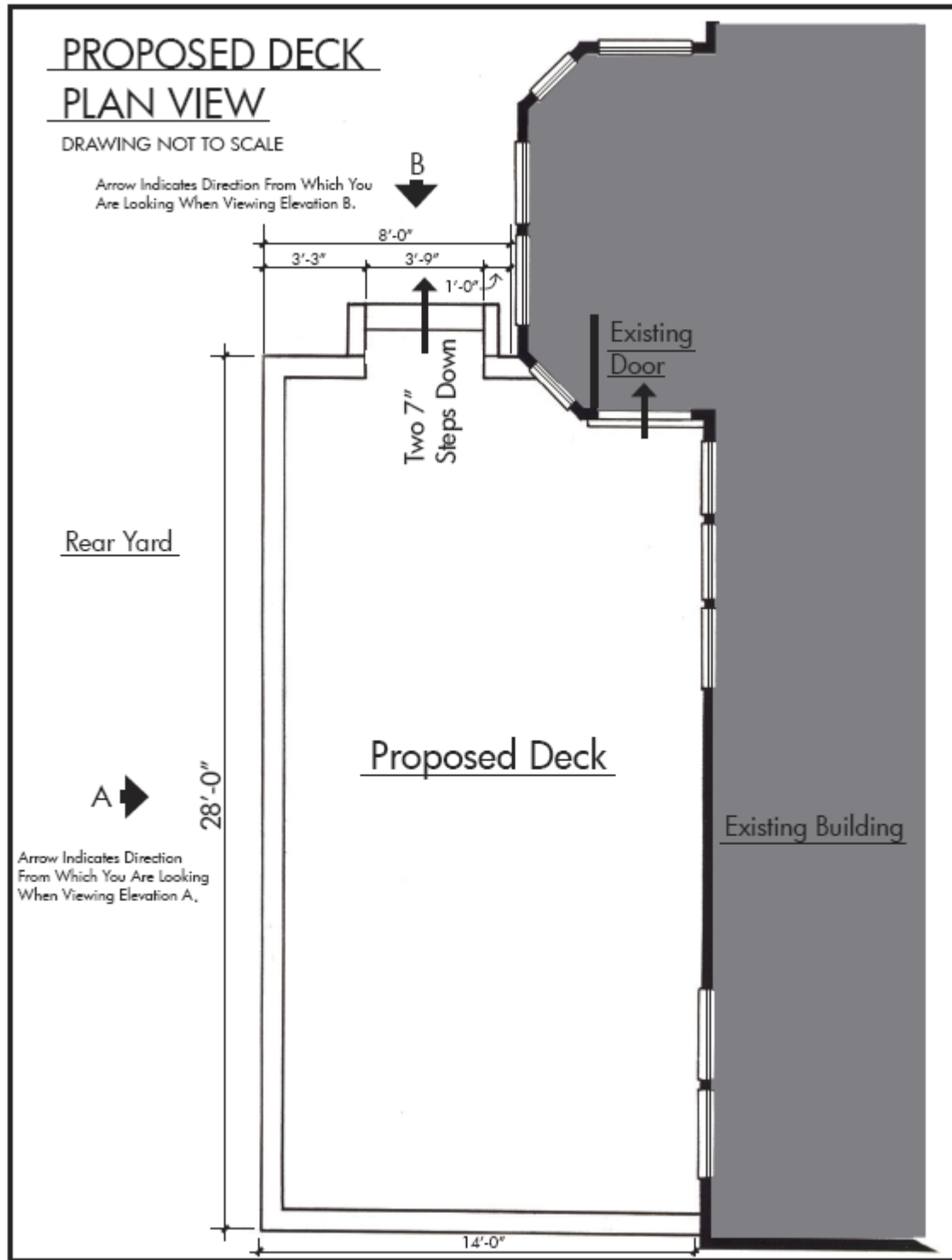
Wood decks must be stained/ painted to compliment the siding or trim of the house. Stain/paint colors for decks must be a color that is in harmony with the house and the neighborhood. The color must be stated in the application and approved by the DRB.

If the open area surrounding the underside of the deck is greater than 18", the area must be enclosed with lattice, skirting, or landscaping. Lattice or skirting must not contact the ground to avoid discoloration and rotting. Skirting for decks for which any part is over twenty-four (24) inches above grade will be individually reviewed and additional landscaping may be required. All skirting must be set back from the outer edges of the deck at least six (6) inches.

### **Application is required for all new decks and modifications to existing decks and must contain the following:**

- a. Property site plan showing the dimensions, location, and indicating distances from adjacent property lines.
- b. Indicate the elevation of the deck in relation to the elevation of the house flooring.  
(It is recommended that the level of an open deck be at least two (2) to three (3) inches lower than the house floor.)
- c. Specify of what material decking, railings, and stairs are to be constructed of (natural wood, composite or aluminum balusters). Baluster spacing must be so as not to allow a four (4) inch sphere to pass between the balusters. If using composite decking, provide a catalog cut of the proposed material and railing system for DRB approval.
- d. Steps with more than two (2) treads (3 risers) require railings to be used in conjunction with the step railing. Indicate dimensions of the treads, risers, and total length of the stairs.
- e. Photographs of proposed location for a deck are suggested.

# Plan Drawing of Deck Example



Rear Elevation Drawing of Deck Example

